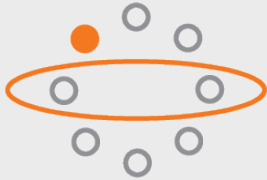


# RUCKUS® UNLEASHED™

Enterprise Wi-Fi® for small organizations



## BENEFITS

### TIME SENSITIVE NETWORKING

- The RUCKUS Unleashed system is purposely designed for modern business and home automation with real-time audio-visual centric applications and automation.
- Wi-Fi 7 bridges the performance gap from 'gigabit' Wi-Fi to 'multi-gigabit' Wi-Fi in support of the insatiable demand for better and faster Wi-Fi.
- The ICX8200 AV switches are dedicated for Pro AV media tower in the home control center, in the classroom, or the lecture hall. The high PoE budget in no fan mode delivers power over Ethernet to devices quietly.

### INSTALL AND MANAGE WITH EASE

- The AV profile GUI wizard lets you set up your Pro AV network easily with just a few mouse clicks
- Flexible operation mode: gateway, bridge, dedicated master to fit your deployment without additional hardware purchase

### ENTERPRISE GRADE SYSTEM

- Enterprise grade hardware components designed for all-time high traffic deployments
- Non-blocking and stacking design for swift global control
- Built-in enterprise redundancy makes reliability handful and easy
- Multiple VE and routing tables for complex traffic directions

### END-TO-END SOLUTION

- In house and at site collaboration with Pro AV partners like AES67, Danta, NDI, Crestron, Q-Sys, and SONOS for the best compatibility
- Comprehensive, expert support for every stage of your Pro AV installation process.

### DESIGNED FOR PROFESSIONAL INSTALLERS

- Installer focused solution with various tools and appropriate support setups
- Optional support and service subscriptions choose by your deployments and service models
- No license purchase required. Power on and enjoy your Unleashed system
- Free cloud access with RUCKUS Unleashed Portal control up to 10 networks
- Seamless, automated setup, inventory management, and oversight of hundreds of networks with a subscription to business remote management services.

## Unleashing Enterprise Power to Your Businesses and Luxury Homes

The modern world economy and daily life are undergoing unprecedented rapid transformation, driven by tailored digital transitions facilitated by revolutionary computing and communication technologies. Artificial Intelligence and parallel computing now enable extensive data analysis. However, providing timely, massive amounts of information becomes increasingly challenging with the proliferation of high-resolution sensors. The demand for real-time data traffic in small businesses and homes is steadily increasing, raising the bar for network requirements.

Real-time audio and video data are crucial for contemporary business operations, including video conferencing, remote work, file synchronization, and AI-driven data analysis. Seamless and consistently reliable connectivity is now a prerequisite for success. Consequently, a robust and secure enterprise-grade network system is ideally suited to meet the elevated demands of small businesses and discerning residential customers.

Setting up and maintaining enterprise networking systems can be complex and requires specialized expertise. Troubleshooting can also become difficult as installations grow increasingly intricate and involve devices from multiple manufacturers.

The RUCKUS Unleashed system is an integrated, state-of-the-art networking solution specifically designed for small businesses and luxury homes. Engineered with proven RUCKUS® enterprise-class technologies, the RUCKUS Unleashed solution is tailored to address the complexities of system configuration, comprehensive management, and overall system manageability. Beyond its seamless compatibility with RUCKUS components, the RUCKUS Unleashed solution also integrates effectively with Pro AV partners such as Crestron, Q-Sys, and NDI.

Furthermore, the system can be customized to meet specific operational needs. Whether deployed in a boutique retail space, a local cafe, or a growing consultancy, the system can be precisely tuned to deliver optimal coverage, signal strength, and data throughput, enabling the connectivity solution to perfectly support business operations.

# Introducing RUCKUS Unleashed

The RUCKUS Unleashed solution is an enterprise network system designed for small business and luxury homes. A premium standalone network management solution for residential and small business networks. Optimized for audio and video streams, the RUCKUS Unleashed system provides the easy onboarding audio-visual setups for conferencing, and high-quality video streaming.

The RUCKUS Unleashed solution is highly reliable, easy to use and affordable. With embedded controller functionality, there's no need to invest in a separate appliance. Patented radio technologies and dedicated traffic management monitor and optimize your network all the time. You can manage your entire network with your phone or web browser anywhere. Remote manages multiple sites without sending truckloads. Oversee, backup and upgrade all the networks remotely from your service center.

RUCKUS Unleashed wireless makes business running easy. Automatic and dynamic radio and network features such as BeamFlex+®, ChannelFly® and SmartMesh™ technologies, RUCKUS Unleashed wireless dynamically manage your network. No daily reboot required.

RUCKUS Unleashed AV profile enables the AV professional to setup the network without going through tedious network configurations.

The RUCKUS Unleashed solution is an enterprise-class network. The redundancy master design and automatic master migration constantly verifies if the network is running and managed. Dedicated traffic control features like application aware traffic control, Wi-Fi Calling handling, SmartCast™ media traffic management makes silky smooth traffic controls for the customers. No IT certificate-based authentication required for a simplified authentication process. Creating professional network security with easy steps.

RUCKUS Unleashed APs and switches deliver all of this and more at an affordable price. And if your business grows and you need to move to a controller- or cloud-based infrastructure, you can—without having to overhaul your infrastructure. Migrate to RUCKUS SmartZone™ Controllers or RUCKUS One® cloud service down the road—using the same RUCKUS Unleashed hardware.



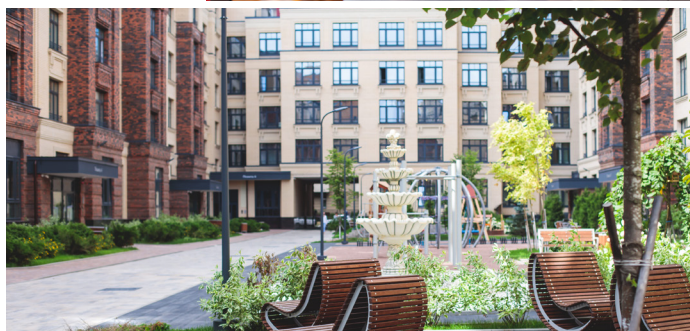


# Best Use Cases

RUCKUS Unleashed APs and switches are ideal for small, single-location networks with up to 128 APs, 2,048 clients, and 8 switches. These solutions offer simplified central control and monitoring through cloud remote management services (RUCKUS Unleashed Portal or remote management services for service providers). They are a strong option for “set-it-and-forget-it” networks requiring high performance and seamless content delivery at a cost-effective price. For medium-sized businesses needing segmented wireless networks, RUCKUS Unleashed dedicated master mode can support up to 4,000 clients, 150 APs, and 16 switches, providing network-wide management with layer 3 segmentation. The RUCKUS Unleashed portfolio provides solutions for a diverse range of luxury homes and businesses with conferencing requirements, accommodating various budgets.

Customers can select from entry-level to ultra-high-performance APs in indoor and outdoor models with diverse mounting options, as well as a selection of AV and stacking switches. The RUCKUS Unleashed solution is well-suited for:

- **Luxury Residences:** Demanding enterprise-class reliability, simple management and onboarding, pro AV compatibility, robust security, and guest access.
- **Resi-mercial (Sports Bars, Houses of Worship):** Requiring dependable pro AV streaming, full compatibility with Pro AV controllers, straightforward configuration for optimal performance, and integrated wired and wireless audio-visual capabilities.
- **Chained Retail Outlets (Stores, Restaurants, Coffee Shops):** Seeking enhanced client traffic statistics, centralized control across multiple locations, and seamless client roaming between sites.
- **Economic Hospitality and MDU:** Desiring an affordable yet dependable network system with a “set-it-and-forget-it” management style. Remote management services including zero-touch onboarding, global network overseeing, and capability of network management key features for service providers.



# Key Benefits

## Best-in-Class Wireless Performance

### BeamFlex+—Patented Adaptive Antenna Technology

RUCKUS Unleashed APs integrate our patented, software-controlled adaptive antennas. BeamFlex+ antennas adapt automatically to client locations and environmental conditions, continually optimizing RF signals for every connected device, on a per-packet basis. It's the "secret sauce" that lets our APs maintain stronger connections and deliver better performance than the competition.

### ChannelFly—Machine Learning Auto Channel Selection

Most APs can switch channels when the one they're using to connect with a given device gets congested. RUCKUS APs with ChannelFly technology, however, use machine learning and specialized algorithms to identify the best alternate channel before switching over. Combined with BeamFlex+ adaptive antenna technology, ChannelFly technology delivers substantially higher throughput than competing APs.

### SmartMesh—Self-Forming, Self-Healing Mesh

The SmartMesh solution makes it simple to blanket every corner of your space with reliable Wi-Fi coverage—while eliminating the need for cumbersome radio planning and expensive cabling to every AP. Just check the "Zero Touch Mesh" box in the management app, and it automatically establishes wireless mesh connections between individual APs. RUCKUS Unleashed APs use our patented smart antenna technology to create strong, reliable mesh links. And if a link ever fails, the network heals itself automatically.

## The Affordable Pro AV Network

### Optimized for Pro AV

The RUCKUS Unleashed network is specifically designed and optimized for audio visual traffic and professional AV networks. Its Pro AV capabilities have been rigorously tested with popular endpoints, enabling seamless compatibility with protocols and systems such as AES67, Dante, Crestron, NDI, and Sonos. The intuitive AV profile simplifies deployment for AV professionals, eliminating IT complexities.

### Effortless Management

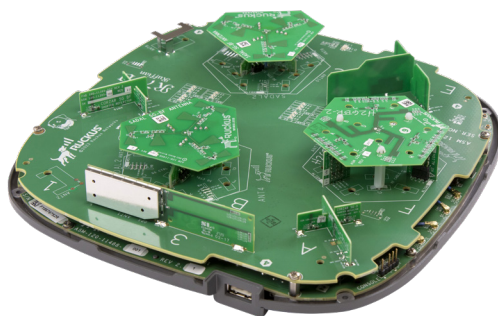
Management is made simple for installers with user-friendly, end-to-end interfaces for quick onboarding and easy maintenance. The RUCKUS Unleashed Mobile app provides end-users with access to network status and client statistics. For comprehensive remote management, the free RUCKUS Unleashed Portal is available for prosumers and installers. Service providers can also benefit from remote management services, offering professional monitoring services scalable to thousands of small networks.

### Enterprise-Grade Performance and Features

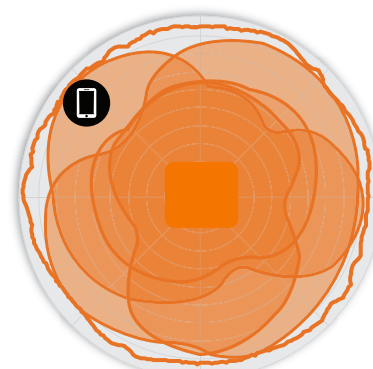
RUCKUS Unleashed access points and switches are built with enterprise-grade hardware, ensuring reliable support for heavy traffic over extended periods. The system excels in high-demand scenarios, such as large home gatherings or surges in customer visits at businesses. Its customizable enterprise features allow for network optimization and security tailored to specific needs, avoiding generic features and system limitations.

### Reduced Costs

RUCKUS Unleashed access points integrate network control functions, eliminating the need for separate controller appliances or access point licenses. This significantly lowers upfront capital expenditure compared to other business-class APs. Furthermore, zero-touch provisioning streamlines physical deployments and maintenance, reducing operational costs associated with truck rolls.



Example of BeamFlex+ pattern



 Client  Composite Pattern  BeamFlex

# Why Enterprise

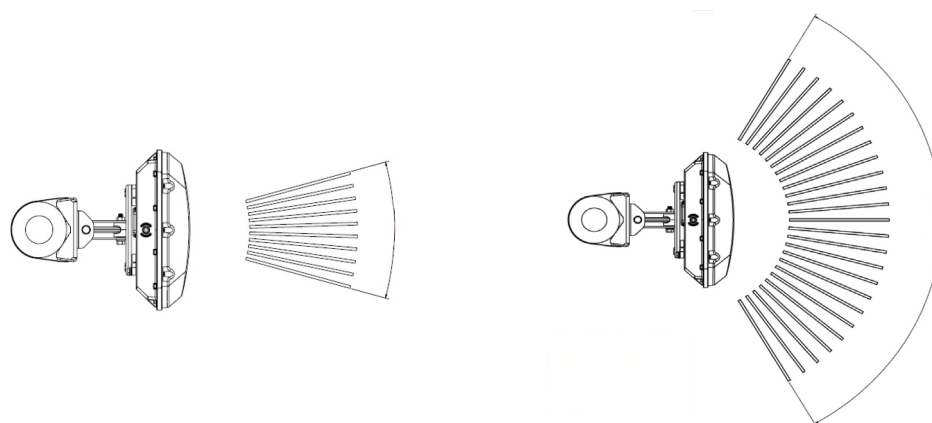
<b>Enterprise grade availability</b>	Non-blocking performance for consistently demanding traffic. The system works in holiday with crowded guests and everyday life for here and now.
<b>Flexible and customizable for your deployment</b>	Customizable workflow details brings the technology to meet your needs, not the other way around. No need to compromise with generic features and limited options.
<b>Reliability and availability</b>	Enterprise-grade availability and reliability are critical for enabling business-critical systems and services to operate seamlessly and without interruptions. These standards often involve implementing robust redundancy, failover mechanisms, and comprehensive disaster recovery plans to minimize downtime. High availability architectures, such as clustering and load balancing, are used to provide continuous service even in the event of hardware or software failures.
<b>Professional support</b>	Optional RUCKUS support offers valuable assistance for network design, troubleshooting, and advanced hardware replacement services.
<b>Cloud tools for service providers</b>	RUCKUS Unleashed remote management services cloud connection tools facilitate simple onboarding, management, and troubleshooting. This empowers service providers to deliver services efficiently, eliminating the need for on-site truck rolls.
<b>End-to-end visibility</b>	Complete network monitoring, spanning wired, wireless, IT, and AV systems, provides consistent performance and rapid issue detection.
<b>Zero touch mesh</b>	Add new RUCKUS Unleashed APs to the existing network securely over the air. Dramatically speed up and simplify the installation of a RUCKUS Unleashed network.
<b>URL filtering</b>	Define web access rules for your network users. Protect your network from malware and phishing sites.
<b>Mobile app</b>	Easy onboarding and management of your network anytime and anywhere
<b>RUCKUS Unleashed portal</b>	Full access to the local web GUI and CLI for configuration and troubleshooting just like you are on the scene.
<b>Remote management services for service providers</b>	Central manages up to thousands of the RUCKUS Unleashed network. Consolidate your control all together without leaving your service center.
<b>AP groups</b>	Apply multiple configuration profiles to different groups of APs.
<b>Zero IT</b>	Easily onboard customers or employees onto your Wi-Fi network through a simple, self-service portal.
<b>SSID rate-limiting</b>	If you want to limit data speeds for a particular group of users (such as guest users), you can create a separate SSID with a data rate “speed limit” that you define.

# RUCKUS Unleashed Wireless Access Points

The following tables illustrate the complete portfolio of RUCKUS Unleashed APs, including indoor, outdoor and wall plate APs. The RUCKUS Unleashed wireless is optimized for AV traffic including Wi-Fi calling, SONOS optimization, SmartMedia QoS, and more.

INDOOR	HARDWARE SPECS	DATA SPEED	AFC	ANTENNA PATTERNS	ETHERNET PORTS
<b>R770</b>	Wi-Fi 7, 2-4-2	12.2 Gbps	✓	4K+	1x 10Gbps POE++ 1x 1Gbps
<b>R670</b>	Wi-Fi 7, 2-2-2 or 2-4 selectable	9.3 Gbps	✓	4K+	1x 5Gbps POE++ 1x 1Gbps
<b>R370</b>	Wi-Fi 7, 2-2	3.6 Gbps	—	—	1x 1Gbps POE
<b>R850</b>	Wi-Fi 6, 8-8	5.9 Gbps	—	4K+	1x 5Gbps POE++ 1x 1Gbps
<b>R750</b>	Wi-Fi 6, 4-4	3.5 Gbps	—	4K+	1x 2.5Gbps POE+ 1x 1Gbps
<b>R650</b>	Wi-Fi 6, 4-4	3 Gbps	—	128	1x 2.5Gbps POE+ 1x 1Gbps
<b>R550</b>	Wi-Fi 6, 2-2	1.8 Gbps	—	64	1x 1Gbps POE+ 1x 1Gbps
<b>R350</b>	Wi-Fi 6, 2-2	1.8 Gbps	—	64	1x 1Gbps POE 1x 1Gbps
<b>R350E</b>	Wi-Fi 6, 2-2	1.8 Gbps	—	—	1x 1Gbps POE 1x 1Gbps

## Unleashed Wireless Access Points (cont.)



T670sn programmable software defined coverage

OUTDOOR	HARDWARE SPECS	DATA SPEED	AFC	ANTENNA PATTERNS	ETHERNET PORTS
<b>T670</b>	Wi-Fi 7, 2-2-2 or 2-4 selectable	9.3 Gbps	✓	4K+	1x 5Gbps POE++ 1x 1Gbps
<b>T670sn</b>	Wi-Fi 7, 2-2-2 or 2-4 selectable 16° ~ 110° Sector antenna	9.3 Gbps	✓	4K+	1x 5Gbps POE++ 1x 1Gbps
<b>T750</b>	Wi-Fi 6, 8-8	3.6 Gbps	—	4K+	1x 2.5Gbps POE++ 1x 1Gbps
<b>T750se</b>	Wi-Fi 6, 4-4 Sector antenna	3.6 Gbps	—	4K+	1x 2.5Gbps POE++ 1x 1Gbps
<b>T350c</b>	Wi-Fi 6, 4-4	1.8 Gbps	—	64	1x 1Gbps POE
<b>T350d</b>	Wi-Fi 6, 2-2 DC input	1.8 Gbps	—	64	1x 1Gbps POE
<b>T350se</b>	Wi-Fi 6, 2-2 Sector antenna	1.8 Gbps	—	64	1x 1Gbps POE

WALL PLATE	HARDWARE SPECS	DATA SPEED	ANTENNA PATTERNS	ETHERNET PORTS
<b>H550</b>	Wi-Fi 6, 2-2	1.8 Gbps	16	1x 1Gbps POE++ 1x 1Gbps POE Out 3x 1Gbps
<b>H350</b>	Wi-Fi 6, 2-2	1.8 Gbps	16	1x 1Gbps POE 2x 1Gbps



# Unleashed Wireless Network Switches

Manage ICX® Ethernet switches from RUCKUS Unleashed dashboard or mobile app. You can manage up to 16 ICX switches on a RUCKUS Unleashed network. ICX switches work seamlessly with RUCKUS Unleashed access points to deliver enterprise-grade wired and wireless management for small organizations.

Gain insights into switch port connectivity, upgrade your switch and perform backup and restore from RUCKUS Unleashed dashboard or mobile app.

## Wi-Fi 7 Switches

10G/Mult-gig Ethernet connections supporting Wi-Fi 7 bandwidth. POE++ Ultra PoE power supply RUCKUS Unleashed Wi-Fi 7 the full communication power on the RUCKUS Unleashed wireless AP.



## Enterprise Switches

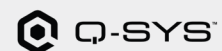
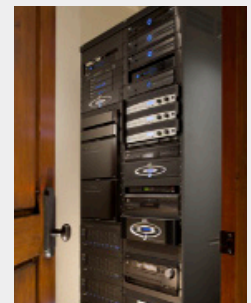
Complete access, aggregation and core layer enterprise switch all controlled and managed by the same RUCKUS Unleashed UI.



## Pro AV Switches

Port in the back design leaves no clutter in front for AV edge installations. Comprehensive compatibility tests with:

- Purpose-built for media rack installations
- Optimized for popular AV standards





# Unleashed Wireless Network Switches

FEATURE	AV8200	ICX8100	ICX8200	ICX7550	ICX7800
VLAN, IGMP and QoS for general AV	✓	✓	✓	✓	✓
PTP-TC for AES67 and Dante	✓	✓	✓	✓	✓
SDVOE	ZP	✗	ZP	ZP	ZP
AV Profile for AV installers	✓	✗	✗	✗	✗
Port in the back HW customization	✓	✗	✗	✗	✗
Stacking	✓	✗	✓	✓	✓
Layer 3 routing	✓	✓	✓	✓	✓
Best for	Pro AV	Gigabit Access	Multi-Gig Access	Aggregate	Core

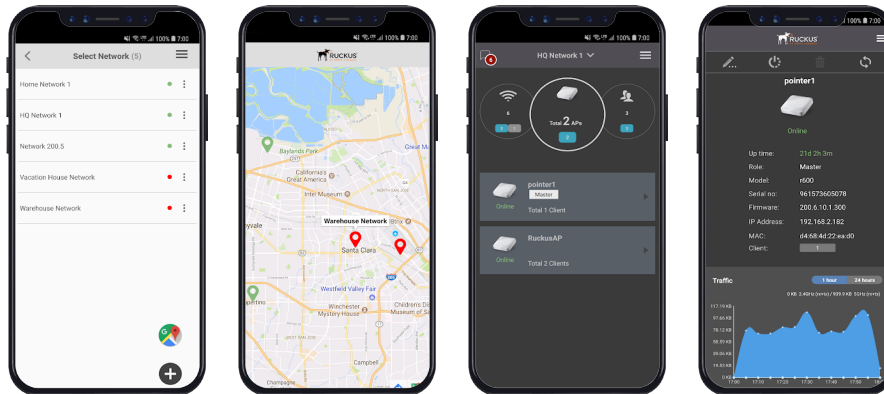
ZP: 10G and multi-gig models

# RUCKUS Unleashed Remote Management

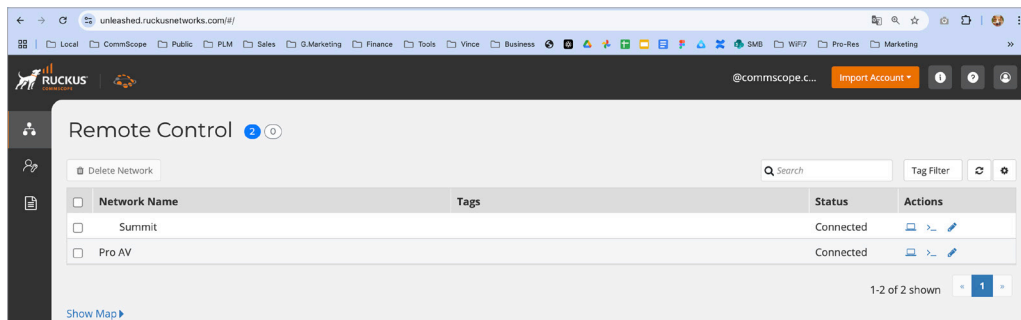
Managing and onboarding the RUCKUS Unleashed system is quick and easy. Using the free RUCKUS Unleashed mobile app, where you can setup the RUCKUS Unleashed master within minutes. You can then connect other APs and switches which can be discovered and managed automatically.

With the RUCKUS Unleashed Portal free cloud access, you can manage your home, business, and significant other's network anytime anywhere. The complete RUCKUS Unleashed GUI and CLI interfaces are all available for full functional operation.

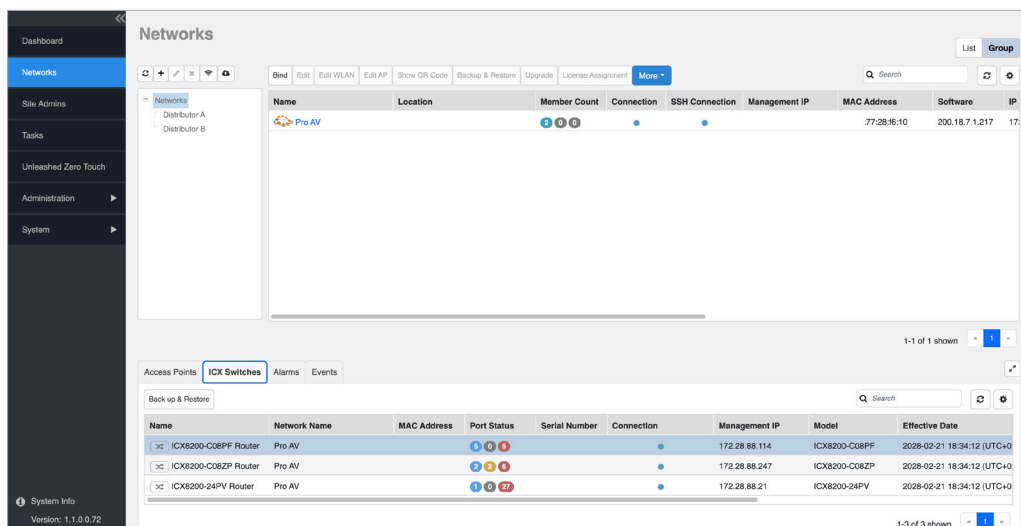
## RUCKUS Unleashed Mobile App



## RUCKUS Unleashed Portal



## Remote Management Services for RUCKUS Unleashed



# RUCKUS Unleashed Remote Management

	UNLEASHED MOBILE APP	UNLEASHED PORTAL	REMOTE MANAGEMENT SERVICES
Remote Access	iOS and Android mobile app	Free Cloud Portal <a href="https://unleashed.ruckusnetworks.com">https://unleashed.ruckusnetworks.com</a>	For service providers <a href="https://partners.ruckus.cloud">https://partners.ruckus.cloud</a>
Management Scale	Single network	Up to 10 networks	Subscriptions
Global view of networks traffic and client devices	✗	✗	✓
Global management for WLAN settings and firmware upgrade	✗	✗	✓
Zero touch provisioning	✗	✗	✓
Inventory and device configuration management	✗	✗	✓
DB backup	✗	✗	✓
Tracing client to connecting AP and switch port	✗	Single network through RUCKUS Unleashed master	Global management for all networks
Reporting: AP and client traffic statistics	✗	Single network through RUCKUS Unleashed master	Global management for all networks
Management	✗	Single network through RUCKUS Unleashed master	Global management for all networks

# Ordering Information

CLASS	MODEL	REGION	SKU	OS	DESCRIPTION
Wi-Fi 7 Indoor AP	R770	US	9U1-R770-US00	Preinstalled	Very-High Performance Wi-Fi 7 tri-radio 2-4-2 indoor AP with 12.2 Gbps max rate
		WW	9U1-R770-WW00	Preinstalled	
		JP	9U1-R770-JP00	Preinstalled	
		Z2	9U1-R770-Z200	Preinstalled	
	R670	US	9U1-R670-US00	Preinstalled	High Performance Wi-Fi 7 tri-radio 2-2-2 or 2-4 selectable indoor AP with 9.3 Gbps max rate
		WW	9U1-R670-WW00	Preinstalled	
		JP	9U1-R670-JP00	Preinstalled	
		Z2	9U1-R670-Z200	Preinstalled	
	R370	US	9U1-R370-US02	Preinstalled	Entry-level Wi-Fi 7 2.4GHz and 5GHz dual-band indoor AP
		WW	9U1-R370-WW02	Preinstalled	
		JP	9U1-R370-JP02	Preinstalled	
		Z2	9U1-R370-Z202	Preinstalled	

CLASS	MODEL	REGION	SKU	OS	DESCRIPTION
Wi-Fi 7 Outdoor AP	T670	US	9U1-T670-US01	Preinstalled	High Performance Wi-Fi 7 tri-radio 2-2-2 or 2-4 selectable outdoor AP with omni-directional antennas
		WW	9U1-T670-WW01	Preinstalled	
		JP	901-T670-JP01	CLI Update	
		Z2	901-T670-Z201	CLI Update	
	T670sn	US	901-T670-US51	CLI Update	High Performance Wi-Fi 7 tri-radio 2-2-2 or 2-4 selectable outdoor AP with 16o ~ 110o sector antennas
		WW	901-T670-WW51	CLI Update	
		JP	901-T670-JP51	CLI Update	
		Z2	901-T670-Z251	CLI Update	

## NOTE:

### Access points region code mappings:

US: United States

WW: Europe, UK, Canada

JP: Japan

Z2: Algeria, Egypt, Israel, Morocco, Tunisia, and Vietnam

## OS:

**Preinstalled:** The Unleashed operating system is preloaded. Installation can be done without downloading the Unleashed OS.

**CLI Update:** Unleashed OS download is required. Internet access and Command line interface (CLI) access is required. Recommended for advanced installers.

**Web Update:** Unleashed OS download is required. The system update can be done through web GUI.



# Ordering Information

CLASS	MODEL	REGION	SKU	OS	DESCRIPTION
Wi-Fi 6 Wall Plate AP	H550	US	9U1-H550-US02	Preinstalled	High Performance Wi-Fi 6 2-2 wall plate AP with BeamFlex+ antenna, 1x Gigabit POE out and 2x Gigabit Ethernet
		WW	9U1-H550-WW02	Preinstalled	
		JP	9U1-H550-JP02	Preinstalled	
		Z2	9U1-H550-Z202	Preinstalled	
	H350	US	9U1-H350-US51	Preinstalled	Entry-level Wi-Fi 6 2-2 wall plate AP with BeamFlex+ antenna and 2x Gigabit Ethernet
		WW	9U1-H350-WW51	Preinstalled	
		JP	9U1-H350JP51	Preinstalled	
		Z2	9U1-H350-Z251	Preinstalled	

CLASS	MODEL	REGION	SKU	OS	DESCRIPTION
Wi-Fi 6 Indoor AP	R850	US	9U1-R850-US00	Preinstalled	Ultra High Performance Wi-Fi 6 8-8 indoor AP with 5.9 Gbps max rate
		WW	9U1-R850-WW00	Preinstalled	
		JP	901-R850-JP00	Web Update	
		Z2	901-R850-Z200	Web Update	
	R750	US	9U1-R750-US00	Preinstalled	Very-High Performance Wi-Fi 6 4-4 indoor AP with 3.5 Gbps max rate
		WW	9U1-R750-WW00	Preinstalled	
		JP	9U1-R750-JP00	Preinstalled	
		Z2	9U1-R750-Z200	Preinstalled	
	R650	US	9U1-R650-US00	Preinstalled	High Performance Wi-Fi 6 4-4 indoor AP with 3 Gbps max rate
		WW	9U1-R650-WW00	Preinstalled	
		JP	9U1-R650-JP00	Preinstalled	
		Z2	9U1-R650-Z200	Preinstalled	
	R550	US	9U1-R550-US00	Preinstalled	Mid-Tier Wi-Fi 6 2-2 indoor AP with 1.8 Gbps max rate
		WW	9U1-R550-WW00	Preinstalled	
		JP	9U1-R550-JP00	Preinstalled	
		Z2	9U1-R550-Z200	Preinstalled	
	R350	US	9U1-R350-US02	Preinstalled	Entry-level Wi-Fi 6 indoor AP with BeamFlex+ antenna technology
		WW	9U1-R350-WW02	Preinstalled	
		JP	9U1-R350-JP02	Preinstalled	
		Z2	9U1-R350-Z202	Preinstalled	
	R350e	US	9U1-R350-US03	Preinstalled	Economic Wi-Fi 6 indoor AP
		WW	9U1-R350-WW03	Preinstalled	

# Ordering Information

CLASS	MODEL	REGION	SKU	OS	DESCRIPTION
Wi-Fi 6 Outdoor AP	T750	US	9U1-T750-US01	Preinstalled	Very-High Performance Wi-Fi 6 4-4 outdoor AP with 3.5 Gbps max rate and omni-directional antennas
		WW	9U1-T750-WW01	Preinstalled	
		JP	9U1-T750-JP01	Preinstalled	
		Z2	9U1-T750-Z201	Preinstalled	
	T750se	US	9U1-T750-US51	Preinstalled	Very-High Performance Wi-Fi 6 4-4 outdoor AP with 3.5 Gbps max rate and 120-degree sector antennas
		WW	9U1-T750-WW51	Preinstalled	
		JP	9U1-T750-JP51	Preinstalled	
		Z2	9U1-T750-Z251	Preinstalled	
	T350c	US	9U1-T350-US20	Preinstalled	Entry-level Wi-Fi 6 2-2 outdoor AP with omni-directional antennas, -20C
		WW	9U1-T350-WW20	Preinstalled	
		JP	9U1-T350-JP20	Preinstalled	
		Z2	9U1-T350-Z220	Preinstalled	
	T350d	US	9U1-T350-US40	Preinstalled	Entry-level Wi-Fi 6 2-2 outdoor AP with omni-directional antennas, DC/POE selectable -40C
		WW	9U1-T350-WW40	Preinstalled	
		JP	9U1-T350-JP40	Preinstalled	
		Z2	9U1-T350-Z240	Preinstalled	
	T350se	US	9U1-T350-US51	Preinstalled	Entry-level Wi-Fi 6 2-2 outdoor AP with BeamFlex+ antenna and 120-degree sector antennas, -40C
		WW	9U1-T350-WW51	Preinstalled	
		JP	9U1-T350-JP51	Preinstalled	
		Z2	9U1-T350-Z251	Preinstalled	

# Features

## OPERATION MODE

Master mode:

- Support up to 128 APs and 2,048 concurrent clients in automatic master mode
- Automatic Master AP Selection: One RUCKUS Unleashed AP serves as the “Master AP,” one of the member APs will take over controller functions if the Master is unreachable
- Preferred Master - Admins can configure an AP to serve as the “preferred” RUCKUS Unleashed Master AP. If the preferred Master is offline, another member AP will become the Master. When the preferred Master comes back online, it will resume the RUCKUS Unleashed Master role.

Dedicated master mode:

- Support up to 150 APs and 4,000 concurrent clients in dedicated master mode
- Smart Redundancy for L3 failover support

Gateway mode:

- The RUCKUS Unleashed Master AP can be set to Gateway mode to provide routing, NAT and DHCP functions for all devices in a local area network, in addition to serving as the controller and serving clients.

Disable WLAN Service on Master AP

## MANAGEMENT

SNMP

SSH

CLI Setup Wizard

Management IP Interface

AP and switch device auto-discovery

Troubleshooting:

- SpeedFlex
- Client Connectivity
- Internet Status
- AP Ethernet Port Status
- AP Reboot Cause Reporting

System logging to external Syslog server

Configuration backup, restore, and reset

One-step firmware upgrades of the entire network from a single interface

Manual firmware updates for selected partial networks

Password Recovery

Multi-language support

Free remote cloud connections managing up to 10 RUCKUS Unleashed networks

RUCKUS Unleashed Remote Management Services for service providers:

- Zero touch onboarding
- Role based network administration
- Multi-layered network management hierarchy
- Customized domain name

## NETWORKING FEATURES

Client Fingerprinting and Device Access Policies

Bonjour Gateway

Bonjour Fencing

Layer 2 roaming

Zero Touch Mesh

DHCP server

## SECURITY

802.1X Authentication Caching

802.1X EAP authentication using an external AAA server (RADIUS)

Access Control Lists

Local user database authentication supports up to 512 users

Client Renaming

Client Isolation

Application recognition and control. Application-based rate-limiting and QoS traffic shaping. The following pie charts are provided:

- Top 10 clients by application
- Top 10 applications used in the networks
- Top 10 applications used by each client

URL Filtering

Rogue AP and rogue DHCP detections

Intrusion detection and prevention

Deny of Service (DoS) protect

## PREMIUM WIRELESS CONTROL

WLAN per radio, up to 16 WLANs per network

WLAN Prioritization

Uniform Recovery SSID

Dynamic PSK™ (Pre-Shared Key or DPSK)

AP Groups

WLAN encryption/authentication options:

- Open + None
- Open + None + MAC Auth
- Open + None + Web Auth
- Open + WPA2 + AES + PSK
- Open + WPA2 + AES + DPSK
- 802.1X + WPA2 + AES + AAA
- 802.1X + WPA3 + SAE + AAA
- Open + WPA3 + SAE
- Open + WPA2/WPA3-Mixed + SAE + AES
- Open + OWE

SmartMesh

Radio Frequency (RF) management features:

- BeamFlex+
- ChannelFly
- Background Scanning
- Automatic Channel Selection based on ChannelFly or Background Scanning
- Band Steering
- Client Load Balancing

Self-Service Guest Pass

Guest Access WLANs

HTTP-based Captive Portal

Same-WLAN support for multiple social media logins

- Facebook
- Google/Google+
- LinkedIn
- Microsoft
- Meta
- Instagram

## Features (cont.)

PREMIUM WIRELESS CONTROL (CONTINUED)
SMS Captive Portal authentication
Zero-IT support for automatic configuration of client Wi-Fi settings
L3 WLAN tunneling
Hotspot (WISPr) WLANs
Wi-Fi Calling and Troubleshooting
SONOS optimization for music streaming
AFC, Automatic Frequency Coordination for 6GHz band
DFS, Dynamic Frequency Selection for 5GHz maximize the RF capabilities for indoor and outdoor connections

SWITCH MANAGEMENT
Switch reporting: port status; PoE utilization; Health; Events & Alarms
Ethernet Port VLAN Support
Switch CLI commands execution through RUCKUS Unleashed GUI with local access or remote management
<ul style="list-style-type: none"><li>• AV Profile configuration for Pro AV installations with:</li><li>• AES67 audio endpoints</li><li>• DANTE audio and video endpoints</li><li>• Crestron (AES67, DANTE audio, video and control)</li><li>• NDI, Network Device Interface</li><li>• Q-Sys audio and video system</li><li>• Audio networking</li><li>• Video networking</li></ul>

ADVANCED SWITCH FEATURES
Perpetual POE
PoE fast start
Multiple VE for and routing tables for enterprise routing
Switch stacking for redundancy and easy management

### About RUCKUS Networks

RUCKUS Networks builds and delivers purpose-driven networks that perform in the demanding environments of the industries we serve. Together with our network of trusted go-to-market partners, we empower our customers to deliver exceptional experiences to the guests, students, residents, citizens and employees who count on them.

[www.ruckusnetworks.com](http://www.ruckusnetworks.com)

Visit our website or contact your local RUCKUS representative for more information.

© 2025 CommScope, LLC. All rights reserved.

CommScope and the CommScope logo are registered trademarks of CommScope and/or its affiliates in the U.S. and other countries. For additional trademark information, see <https://www.commscope.com/trademarks>. Wi-Fi, Wi-Fi 6 and Wi-Fi 7 are trademarks of the Wi-Fi Alliance. All product names, trademarks and registered trademarks are property of their respective owners.

PA-114091.9-EN (10/25)

**RUCKUS**<sup>®</sup>  
**NETWORKS**