

SYSTIMAX[®]
COMMSCOPE

GigaREACH[™] XL

EMEA Solutions guide

Contents

Introduction	2
GigaREACH XL outdoor cables.....	3
GigaREACH XL CPR rated cables.....	3
Panels.....	4
SYSTIMAX® panels for the GigaREACH XL solution	
SYSTIMAX GigaSPEED XL® 1100 GS3 panels.....	5
SYSTIMAX GigaSPEED XL VisiPATCH® panels.....	5
SYSTIMAX GigaSPEED XL PatchMAX® GS3 panels.....	5
SYSTIMAX jacks for the GigaREACH XL solution	
SYSTIMAX 360™ GigaSPEED XL MGS 400.....	6
Ceiling connector assemblies	7
GigaREACH XL plugs, boots and tools	8
SYSTIMAX category 6 UTP cords for the GigaREACH XL solutions	
SYSTIMAX 360 GS8E modular patch cord configurator.....	9
LSZH SYSTIMAX 360 GigaSPEED XL GS8E modular patch cords (U/UTP configurator).....	10
Reduced diameter MiNo6 cords configurator.....	11

Extend your network's reach, **not your risk**

The transformation of enterprise networks has been rapid and disruptive. Today's network is expected to connect and power all operational systems and devices. Not a problem, assuming the device is less than 100 meters from the nearest telecommunications room. But as more devices move to the edge, some are needed beyond the 100-meter limit set by the standards. How do you extend the reach of your structured cabling network to support them? The options are limited, and each adds cost and performance risk:

- Add another telecommunications room
- Use a PoE extender
- Switch from copper to fiber

With relatively few devices needing support beyond 100 m, the cost and risks are difficult to justify. So, how do you balance the need to support these edge devices with the need for reliable performance of standards-based connection?

CommScope's SYSTIMAX GigaREACH XL solution.

The GigaREACH XL portfolio

The GigaREACH XL portfolio is the first Category 6 UTP solution that warranties support for 100 Mbps/90 watts up to 200 m, 1 Gbps/90 W up to 150 m, and 10 Mbps/90 W up to 250 m.

A proprietary twist technology enables the use of the industry's lowest-loss conductor, reducing power transmission loss between power source and device by 50%. The result? Improved energy savings, more sustainability and a higher power budget over longer distances—warranted by CommScope through the SYSTIMAX Assurance™ program..

Extend your structured cabling network with one uninterrupted, easy-to-manage connection, and know it will perform as expected.

Welcome to GigaREACH XL.

GigaREACH XL warranties:

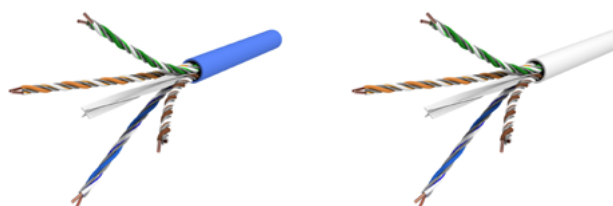
- 100 Mbps/90 W up to 200 m
- 1 Gbps/90 W up to 150 m
- 10 Mbps/90 W up to 250 m

GigaREACH XL cables



GigaREACH XL outdoor cables

MID	Product code	Description
760258481	1573A Black	Outdoor GigaREACH XL, black jacket, 1000 ft reel (305 m)
760258679	1573A Black 3kft	Outdoor GigaREACH XL, black jacket, 3000 ft reel (915 m)



GigaREACH XL CPR rated cables

MID	Product code	Description	CPR Rating
760258512	3073A WHT C6 4/21 U/UTP R1000	GigaREACH™XL 3073A Category 6 U/UTP Cable, low smoke zero halogen, white jacket, 4 pair count, 1000 ft (305 m) length, reel	Dca
760262943	3073A WHT C6 4/21 U/UTP R1640	GigaREACH™XL 3073A Category 6 U/UTP Cable, low smoke zero halogen, white jacket, 4 pair count, 1640 ft (500 m) length, reel	Dca
760259260	3073A WHT C6 4/21 U/UTP R3000	GigaREACH™XL 3073A Category 6 U/UTP Cable, low smoke zero halogen, white jacket, 4 pair count, 3000 ft (915 m) length, reel	Dca
760258511	3073A BLU C6 4/21 U/UTP R1000	GigaREACH™XL 3073A Category 6 U/UTP Cable, low smoke zero halogen, blue jacket, 4 pair count, 1000 ft (305 m) length, reel	Dca
760263025	3073A BLU C6 4/21 U/UTP R1640	GigaREACH™XL 3073A Category 6 U/UTP Cable, low smoke zero halogen, blue jacket, 4 pair count, 1640 ft (500 m) length, reel	Dca
760259259	3073A BLU C6 4/21 U/UTP R3000	GigaREACH™XL 3073A Category 6 U/UTP Cable, low smoke zero halogen, blue jacket, 4 pair count, 3000 ft (915 m) length, reel	Dca
760259358	3073A-B WHT C6 4/21 U/UTP R1000	GigaREACH™XL 3073A-B Category 6 U/UTP Cable, low smoke zero halogen, white jacket, 4 pair count, 1000 ft (305 m) length, reel	B2ca
760262944	3073A-B WHT C6 4/21 U/UTP R1640	GigaREACH™XL 3073A-B Category 6 U/UTP Cable, low smoke zero halogen, white jacket, 4 pair count, 1640 ft (500 m) length, reel	B2ca
760259360	3073A-B WHT C6 4/21 U/UTP R3000	GigaREACH™XL 3073A-B Category 6 U/UTP Cable, low smoke zero halogen, white jacket, 4 pair count, 3000 ft (915 m) length, reel	B2ca
760259357	3073A-B BLU C6 4/21 U/UTP R1000	GigaREACH™XL 3073A-B Category 6 U/UTP Cable, low smoke zero halogen, blue jacket, 4 pair count, 1000 ft (305 m) length, reel	B2ca
760263026	3073A-B BLU C6 4/21 U/UTP R1640	GigaREACH™XL 3073A-B Category 6 U/UTP Cable, low smoke zero halogen, blue jacket, 4 pair count, 1640 ft (500 m) length, reel	B2ca
760259359	3073A-B BLU C6 4/21 U/UTP R3000	GigaREACH™XL 3073A-B Category 6 U/UTP Cable, low smoke zero halogen, blue jacket, 4 pair count, 3000 ft (915 m) length, reel	B2ca

GigaREACH XL panels



Panels

MID	Product code	Description
760206797	1100-U-GS3-24	1100 GS3 panel - 24 port
760184507	FLEXIMAX	Unshielded Modular Panel, M-series, 1U, 24 port, Black

SYSTIMAX panels for the GigaREACH XL solution



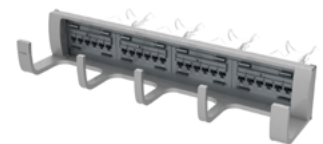
SYSTIMAX GigaSPEED XL 1100 GS3 panels

MID	Product code	Description	iPATCH® ready
760152561	360-IPR-1100-E-GS3-1U-24	SYSTIMAX 360 GigaSPEED XL Unshielded Panel Cat6, 1U, 24 port, Silver	Yes
760152579	360-IPR-1100-E-GS3-2U-48	SYSTIMAX 360 GigaSPEED XL Unshielded Panel Cat6, 2U, 48 port, Silver	Yes
760151308	360-IPR-1100A-E-GS3-1U-24	SYSTIMAX 360 GigaSPEED XL Unshielded Angled Panel Cat6, 1U, 24 port, Silver	Yes
760151753	360-IPR-1100A-E-GS3-2U-48 4	SYSTIMAX 360 GigaSPEED XL Unshielded Angled Panel Cat6, 2U, 48 port, Silver	Yes
760151167	360-IPR-1100-GS3-DM6	GS3 Evolve Distribution Module 6-Port	–
760155739	360-E-KIT-1U	SYSTIMAX 360 GigaSPEED X10D® and GigaSPEED XL Evolve 1U U/UTP Panel Kit	Yes
760155747	360-E-KIT-2U	SYSTIMAX 360 GigaSPEED X10D and GigaSPEED XL Evolve 2U U/UTP Panel Kit	Yes
760152785	360-A-E-KIT-1U	SYSTIMAX 360 GigaSPEED X10D and GigaSPEED XL Evolve Angled 1U U/UTP Panel Kit	Yes
760152793	360-A-E-KIT-2U	SYSTIMAX 360 GigaSPEED X10D and GigaSPEED XL Evolve Angled 2U U/UTP Panel Kit	Yes



SYSTIMAX GigaSPEED XL VisiPATCH panels

MID	Product code	Description
760049452	VP360-12U-96P	GigaSPEED X10D VisiPatch 360 12U Patch Panel Kit
760049445	VP360-4U-32P	GigaSPEED X10D VisiPatch 360 4U Patch Panel Kit



SYSTIMAX GigaSPEED XL PatchMAX GS3 panels

MID	Product code	Description	iPATCH ready
760102244	360-PM-GS3-2U-24	SYSTIMAX 360 GigaSPEED XL PATCHMAX GS3 Category 6 U/UTP Patch Panel, 24 port	Yes
760117366	360-PM-GS3-2U-48	SYSTIMAX 360 GigaSPEED XL PATCHMAX GS3 Category 6 U/UTP Patch Panel, 48 port	Yes
760108993	360-PM-KIT-2U-24 2U	SYSTIMAX 360™ PATCHMAX Panel Kit, 2U, 24 port	Yes
760117408	360-PM-KIT-2U-48 2U	SYSTIMAX 360™ PATCHMAX Panel Kit, 2U, 48 port	Yes
760117382	360-PM-GS3-DM-12	SYSTIMAX 360 GigaSPEED XL PATCHMAX Unshielded Distribution Module Cat6, 12 port, Gray	–
760102269	360-PM-GS3-DM-6	SYSTIMAX 360 GigaSPEED XL PATCHMAX Unshielded Distribution Module Cat6, 6 port, Gray	–

SYSTIMAX jacks for the GigaREACH XL solution



SYSTIMAX 360 GigaSPEED XL MGS 400

MID	Product code	Description
700206667	MGS400-BK	GigaSPEED XL M-Series Modular Jack, RJ45, Cat6 Unshielded, Black
700206683	MGS400-OR	GigaSPEED XL M-Series Modular Jack, RJ45, Cat6 Unshielded, Orange
700206691	MGS400-YL	GigaSPEED XL M-Series Modular Jack, RJ45, Cat6 Unshielded, Yellow
700206709	MGS400-GN	GigaSPEED XL M-Series Modular Jack, RJ45, Cat6 Unshielded, Green
700206725	MGS400-WH	GigaSPEED XL M-Series Modular Jack, RJ45, Cat6 Unshielded, White
700206741	MGS400-RD	GigaSPEED XL M-Series Modular Jack, RJ45, Cat6 Unshielded, Red
700206758	MGS400-BL	GigaSPEED XL M-Series Modular Jack, RJ45, Cat6 Unshielded, Blue
700206675	MGS400-VI	GigaSPEED XL M-Series Modular Jack, RJ45, Cat6 Unshielded, Violet
700206717	MGS400-IV	GigaSPEED XL M-Series Modular Jack, RJ45, Cat6 Unshielded, Ivory
700206733	MGS400-GY	GigaSPEED XL M-Series Modular Jack, RJ45, Cat6 Unshielded, Gray
760250041	ECO MGS400-WH-24	GigaSPEED XL M-Series Modular Jack, RJ45, Cat6 Unshielded, White (24 ea/pkg)
760250042	ECO MGS400-BK-24	GigaSPEED XL M-Series Modular Jack, RJ45, Cat6 Unshielded, Black (24 ea/pkg)
760250043	ECO MGS400-BL-24	GigaSPEED XL M-Series Modular Jack, RJ45, Cat6 Unshielded, Blue (24 ea/pkg)
760250044	ECO MGS400-IV-24	GigaSPEED XL M-Series Modular Jack, RJ45, Cat6 Unshielded, Ivory (24 ea/pkg)
760252279	ECO MGS400-OR-24	GigaSPEED XL M-Series Modular Jack, RJ45, Cat6 Unshielded, Orange (24 ea/pkg)
760252282	ECO MGS400-GN-24	GigaSPEED XL M-Series Modular Jack, RJ45, Cat6 Unshielded, Green (24 ea/pkg)

Ceiling connector assemblies



Ceiling connector assemblies

MID	Product code	Description
760235587	CCA-CAT6-PLENUM-BLACK-N018	Category 6 U/UTP cord, plenum, RJ45 to ceiling connector, 1.5 ft, black
CO13JX2-88N018	CCA-CAT6-WH-18IN	Category 6 U/UTP Cord, Plenum, RJ45 to ceiling connector, 18 in, white
CO13JX2-88F0XX	CCA-CAT6-WH-2FT	Category 6 U/UTP Cord, Plenum, RJ45 to ceiling connector, XX* ft, white
COP3JP2-88F0XX	CCA-6-L-WH-XXFT	Category 6 U/UTP Cord, LSZH, RJ45 to ceiling connector, XX* ft, white
COP3JP2-88N018	CCA-6-L-WH-18IN	Category 6 U/UTP Cord, LSZH, RJ45 to ceiling connector, 18 in, white
760244061	CCA-BK	Ceiling Connector Assembly (CCA) without cordage, black
760234921	CCA-WH	Ceiling Connector Assembly (CCA) without cordage, white

*XX – 02, 03, 07, 11, 15, 20, 25, 30, 40, 50 feet

GigaREACH XL plugs, boots and tools

The modular plug specified in this document is intended for use with the GigaREACH XL cable family (1073, 2073, 3073, and 1573).



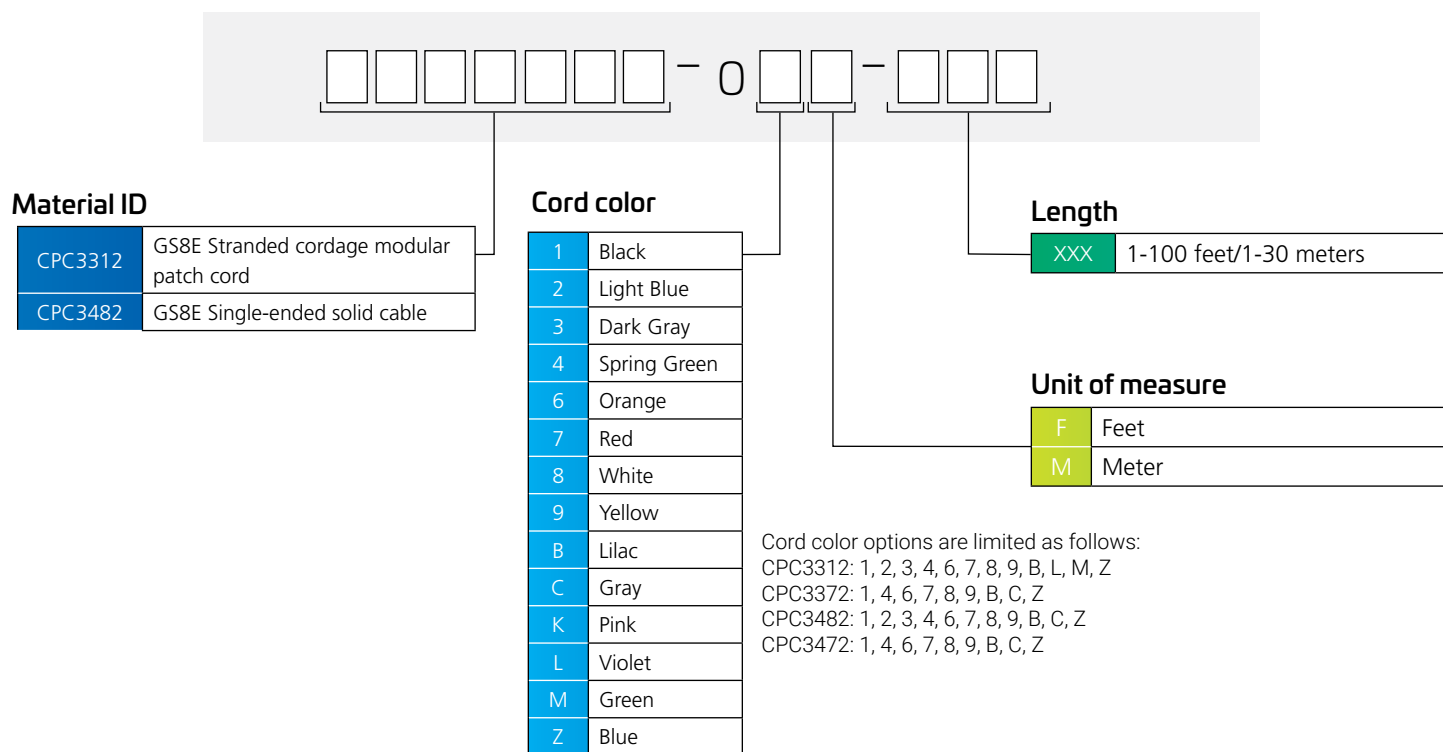
MID	Product code	Description
760258800	Plug Kit, 100pcs	Plug, Load Bar and Wire Manager
760259000	Plug Kit, 25pcs	Plug, Load Bar and Wire Manager
1933943-2	Plug Boot, Gray, 100pcs	Boot with AntiSnag feature*
760252606	Modular Plug Hand Tool For 8P MP	.310 CAT 6/6A, UTP GigaREACH

*Boot is not part of the Plug Kit and is ordered separately. Boot component is optional but required when routing cable assembly in areas that pose risks of the plug latch to be snagged and damaged.

SYSTIMAX category 6 UTP cords for the GigaREACH XL solution

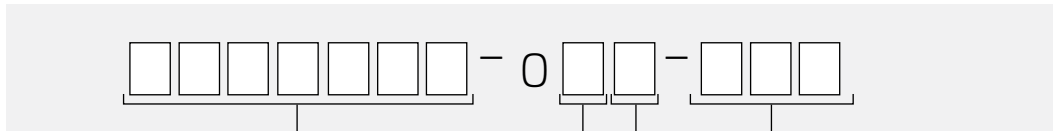
Material ID	Description	Cable Assembly Length Range
CPC3312-0XXXXX	GigaSPEED XL Cat 6 RJ45 Patch Cord, Non-Plenum, Available Jacket Colors: Black Blue Dark gray Green Light blue Lilac Orange Purple Red Spring green Violet White Yellow	1-100 feet/1-30 meters
CPC3392-0XXXXX	GigaSPEED XL Cat 6 RJ45 Patch Cord, LSZH, Available Jacket Colors:Black Blue Dark gray Light blue Lilac Orange Red Spring green White Yellow	1-100 feet/1-30 meters
CPP3392-0XXXXX	GigaSPEED XL Cat 6 RJ45 Patch Cord, LSZH, ECO Packaging Available Jacket Colors:Black Blue Dark gray Light blue Lilac Orange Red Spring green White Yellow	1-100 feet/1-30 meters
CO166S2-0XXXXX	MiNo6 Cat 6 U/UTP Reduced Diameter RJ45 Patch Cord, LS-CM Dual Rated, Available Jacket Colors: Black Blue Dark gray Green Light blue Orange Purple Red Spring green Violet White Yellow	1-131 feet/1-40 meters
COP66S2-0XXXXX	MiNo6 Cat 6 U/UTP Reduced Diameter RJ45 Patch Cord, LS-CM Dual Rated, ECO Packaging Available Jacket Colors: Black Blue Dark gray Green Light blue Orange Purple Red Spring green Violet White Yellow	1-131 feet/1-40 meters
CO15542-0XXXXX	CommScope Cat 6, UTP, Outdoor Patch Cord	1-328 feet/1-100 meters

SYSTIMAX 360 GS8E modular patch cord configurator



SYSTIMAX category 6 UTP cords for the GigaREACH XL solution - LSZH

LSZH SYSTIMAX 360 GigaSPEED XL GS8E modular patch cords (U/UTP) configurator



Material ID

CPC3392	GS8E Stranded LSZH cordage
CPC3492	GS8E Single-ended stranded LSZH cordage
CPC3222	GS8E MGS400 on 3071 solid LSZH cordage
CPC3422	GS8E Single-ended solid LSZH cable
CPC2222	MGS400-MGS400 on 3071 solid LSZH cable
CPC3392*	GS8E-L ECO modular patch cord

* Eco-friendly packaging. Does not contain single-use plastics in packaging.

Cord color

1	Black
2	Light Blue
3	Dark Gray
4	Spring Green
6	Orange
7	Red
8	White
9	Yellow
B	Lilac
C	Gray
K	Pink
L	Violet
M	Green
Z	Blue

Cord color options are limited as follows:

CPC3392: 1, 2, 3, 4, 6, 7, 8, 9, B, Z
 CPC3492: 1, 2, 3, 4, 6, 7, 8, 9, B, Z
 CPC3222: 1, 2, 3, 4, 6, 7, 8, 9, B, Z
 CPC3422: 1, 2, 3, 4, 6, 7, 8, 9, B, Z
 CPC2222: 8, B
 CPC3392: 1, 2, 3, 4, 6, 7, 8, 9, B, Z

Length

XXX	1-100 feet/1-30 meters
-----	------------------------

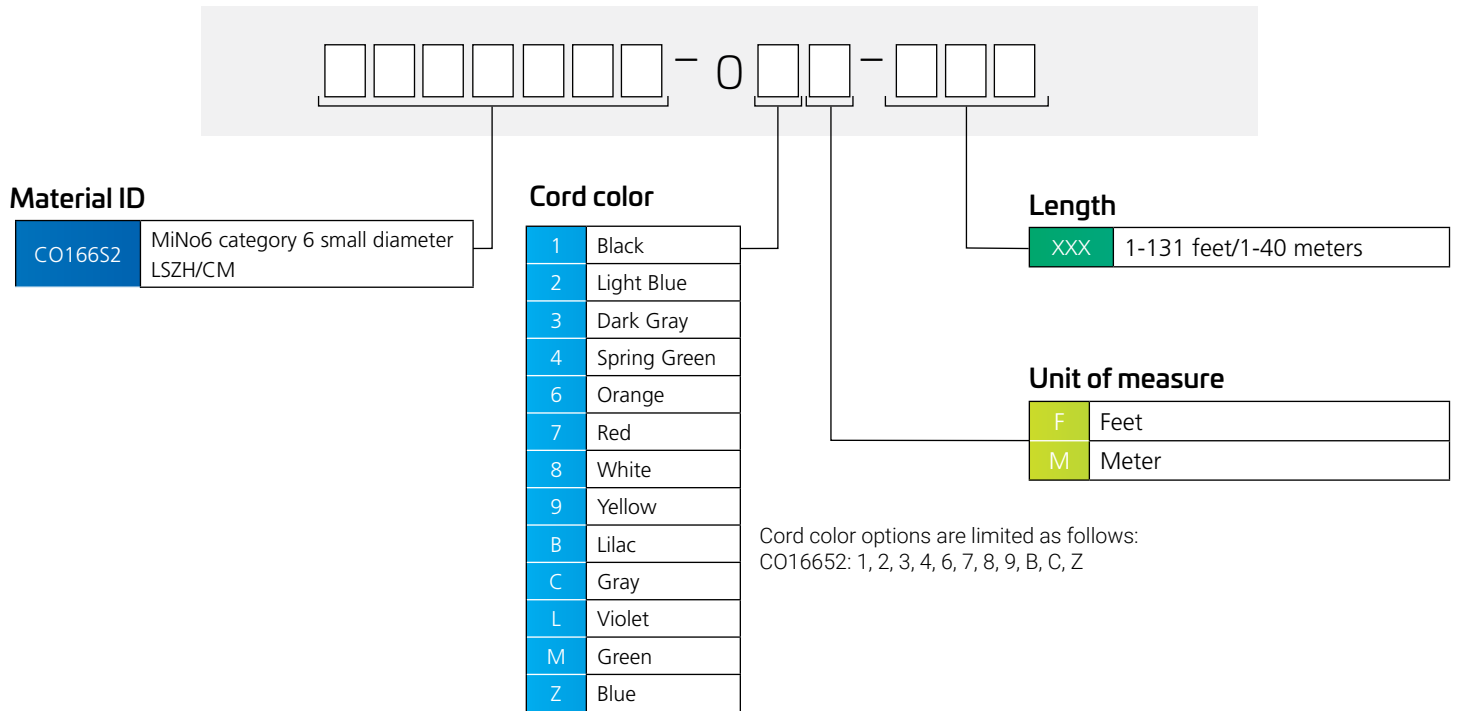
Unit of measure

F	Feet
M	Meter

SYSTIMAX category 6 UTP cords for the GigaREACH XL solution - Reduced diameter MiNo6 cords

Reduced diameter MiNo6 configurator

MiNo cords: small diameter unshielded (UTP) outer cable diameter 4.95 mm



*Consult your local CommScope system engineer (SE) to determine the impact of 28 AWG cords on channel length

For more information about installation guidelines please download this [document](#).

CommScope pushes the boundaries of communications technology with revolutionary ideas and ground-breaking discoveries that spark profound human achievement.

We collaborate with our customers and partners to design, create and build the world's most advanced networks. It is our passion and commitment to identify the next opportunity and realize a better tomorrow. Discover more at commscope.com



commscope.com

Visit our website or contact your local CommScope representative for more information.

©2026 CommScope Technologies LLC, an Amphenol company. All rights reserved. CommScope and the CommScope logo are registered trademarks of CommScope and/or its affiliates in the U.S. and other countries. For additional trademark information see <https://www.commscope.com/trademarks>. All product names, trademarks and registered trademarks are property of their respective owners.