

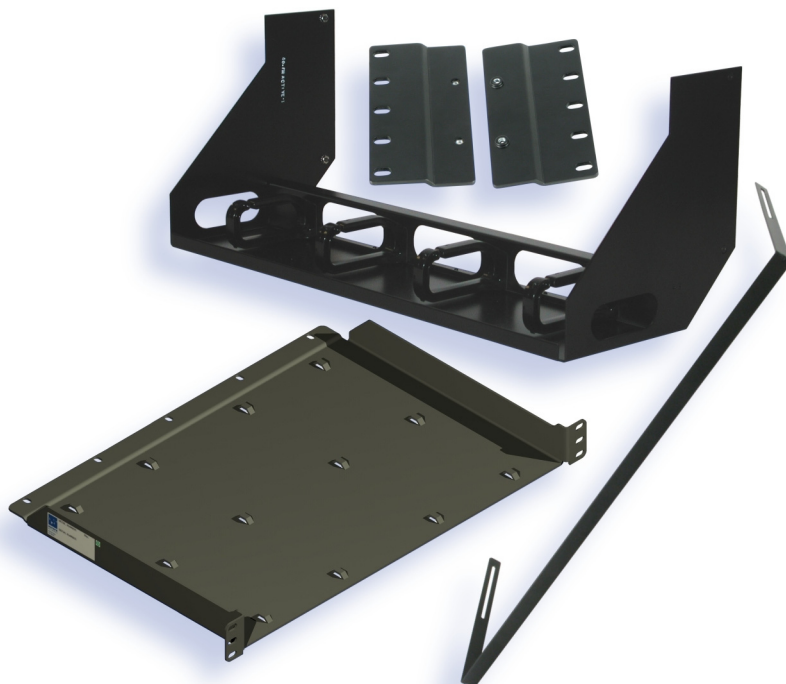
FEATURES

- Rear-mounted Fiber Management Adapter (CH3000U-FM-00)
- Fiber Routing Shelf (CH3000U-FM-01)
- Fiber Management Rail Kit Adapter (CH3000U-FM-02)
- 23-inch Chassis Rack Adapter Kit (CH3000U-RE-00)

CommScope offers several accessories for the CH3000 chassis with the advanced mid-plane, 3RU chassis design which offers the network operator a platform featuring maximum flexibility, high packaging density, and simplicity of operation.

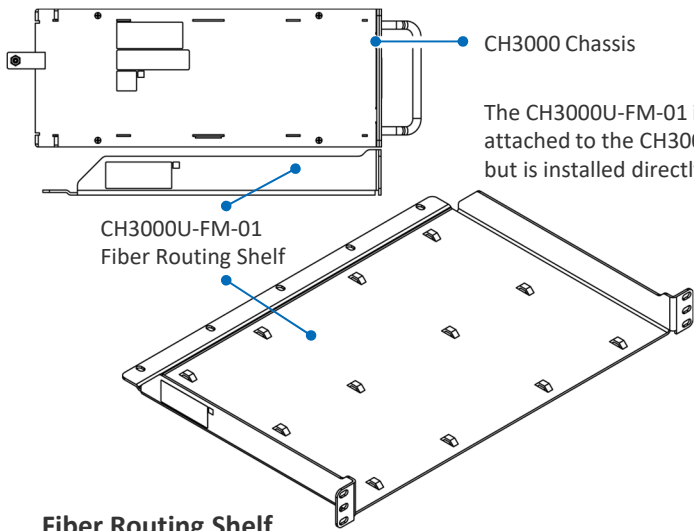
The CH3000U-FM-00 Fiber Management Adapter mounts to the rear of the chassis using fastening hardware provided with the adapter and extends an additional 1RU (1.75") below the bottom of the chassis frame.

The CH3000U-FM-01 Fiber Routing Shelf is not mounted to the chassis. Instead, it occupies a 1RU space below the chassis. It is designed to provide rigid support for fiber cables routed from the front to the rear or simply a convenient storage shelf for excessive cable lengths.



The CH3000U-FM-02 Fiber Management Rail Kit Adapter attaches to the top rear of the chassis using fastening hardware provided and provides a rail for managing fiber.

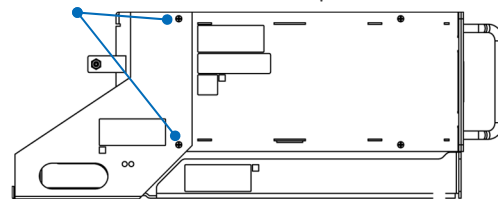
The CH3000U-RE-00 23-inch Chassis Rack Adapter Kit adapts the CH3000 chassis for mounting in 23" wide racks. It may also be used to adapt the PF3000 series passives frames for mounting in 23" wide racks.



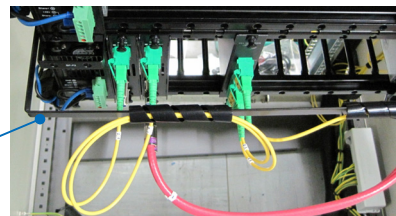
Fiber Routing Shelf

Dimensions:
12.8" D x 1.75" H x 19.0" W (1RU)
(32.5 cm x 4.4 cm x 48.5 cm)
Weight: 1.6 lbs (0.73 kg)

CH3000U-FM-00 Fiber Management Adapter attached to CH3000 Chassis with provided hardware



CH3000U-FM-01 Fiber Routing Shelf under the CH3000 Chassis

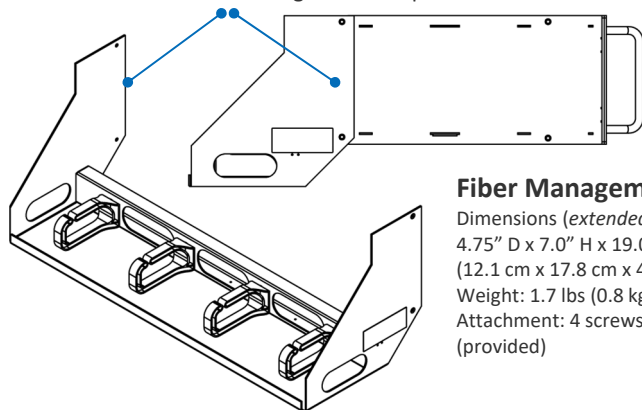


CH3000U-FM-02 Fiber Management Rail

Fiber Management Rail Kit Adapter

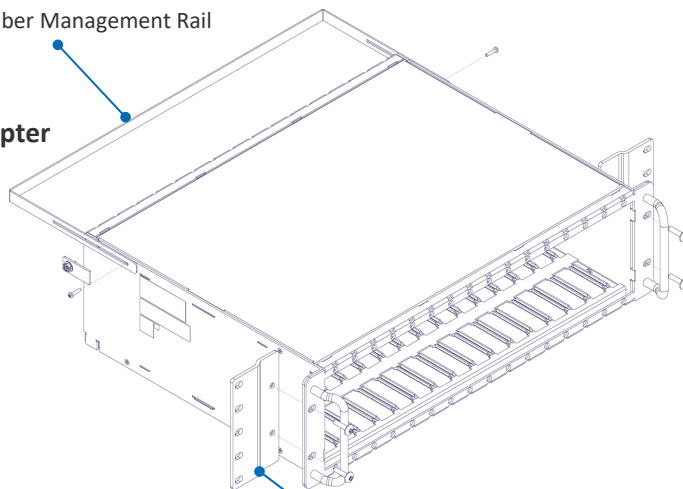
Dimensions (for each of 2 adapters):
17.1" L x 8.0" D (43.4 cm x 20.3 cm)
Attachment: 4 screws and nuts (provided)
Black spiral tubing

CH3000U-FM-00 Fiber Management Adapter



Fiber Management Adapter

Dimensions (extended depth in addition to CH3000):
4.75" D x 7.0" H x 19.0" W (4RU)
(12.1 cm x 17.8 cm x 48.5 cm)
Weight: 1.7 lbs (0.8 kg)
Attachment: 4 screws and self-locking nuts (provided)



CH3000U-RE-00 Rack Adapter (1 of 2)

23-inch Chassis Rack Adapter Kit

Dimensions (for each of 2 adapters):
2.7" W x 5.2" H (6.9 cm x 13.2 cm)
Attachment: 8 screws (provided)

ORDERING INFORMATION

Model Name	Description
CH3000U-FM-00	Fiber Management Adapter
CH3000U-FM-01	Fiber Routing Shelf
CH3000U-FM-02	Fiber Management Rail Kit Adapter
CH3000-RE-00	23-inch Chassis Rack Adapter Kit

RELATED PRODUCTS

CH3000 Transmitters	Optical Patch Cords
CH3000 Receivers	Optical Passives
Management Module	Installation Services

Contact Customer Care for product information and sales:

- United States: 866-36-ARRIS
- International: +1-678-473-5656



Note: Specifications are subject to change without notice.

Copyright Statement: © 2022 CommScope, Inc. All rights reserved. ARRIS and the ARRIS logo are trademarks of CommScope, Inc. and/or its affiliates. All other trademarks are the property of their respective owners. No part of this content may be reproduced in any form or by any means or used to make any derivative work (such as translation, transformation, or adaptation) without written permission from CommScope, Inc and/or its affiliates ("CommScope"). CommScope reserves the right to revise or change this content from time to time without obligation on the part of CommScope to provide notification of such revision or change.

87-10396-RevE_CH3000_Accessories