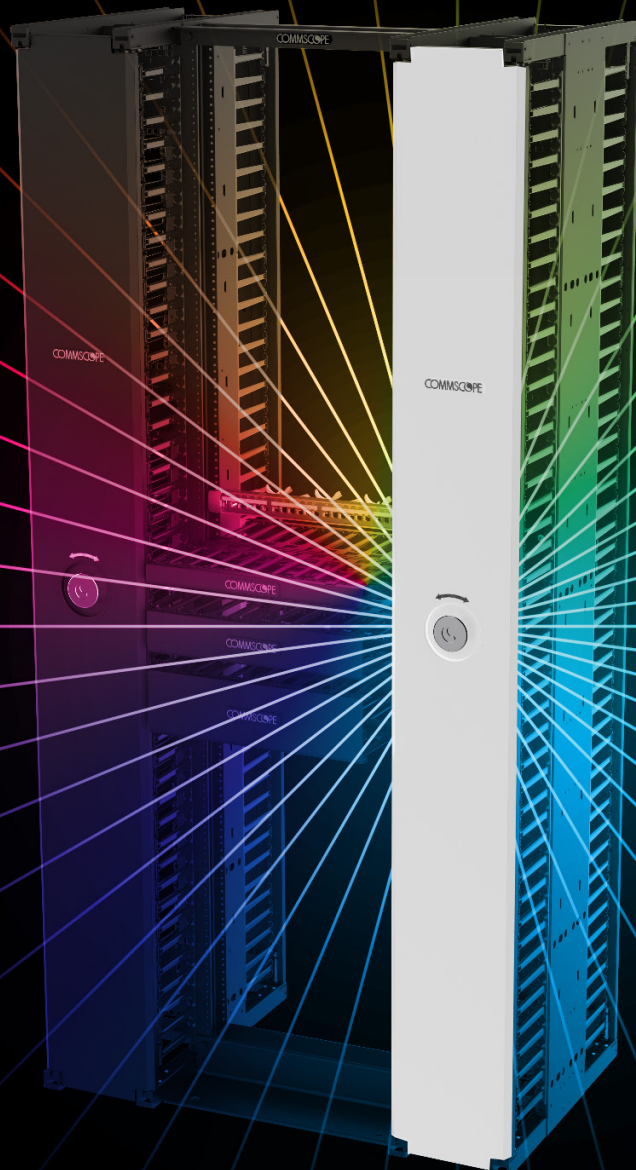


**SYSTIMAX**<sup>®</sup>  
COMMSCOPE

# CableGuide 360<sup>™</sup>

cable management platform



YOUR NETWORK  
**YOUR FUTURE**



# CableGuide 360

## cable management platform

Today's enterprise networks are edge based and hyperconnected. Cabling in the backbone network and horizontal sub-systems is densifying—growing more complex and unmanageable. It's all converging on vertical and horizontal cabling managers that weren't designed to handle the strain.

Enterprise deployments of IoT, edge devices and faster lane speeds are driving densification in the backbone and access sub-systems. This shift is having a profound effect on infrastructure manageability and performance. Nowhere is this more acute than in the telecommunications and equipment rooms where the vertical backbone cabling transitions to the horizontal subsystem cabling.

However, conventional cable management solutions are proving too inflexible, bulky and capacity-limited to address the disruptive changes. This isn't just our opinion. At CommScope, we're in constant dialogue with our enterprise customers. So, we asked them: *"What do you need in a cable management system in order to adapt and thrive in this new reality?"*

### *They answered:*

- Simplified, user-friendly designs that are easier to deploy and manage
- A solution with increased cable capacity, organization and fiber protection
- More flexibility in panel widths/heights, configurations and cable types/sizes
- Reliable global availability and performance supported by a warranty

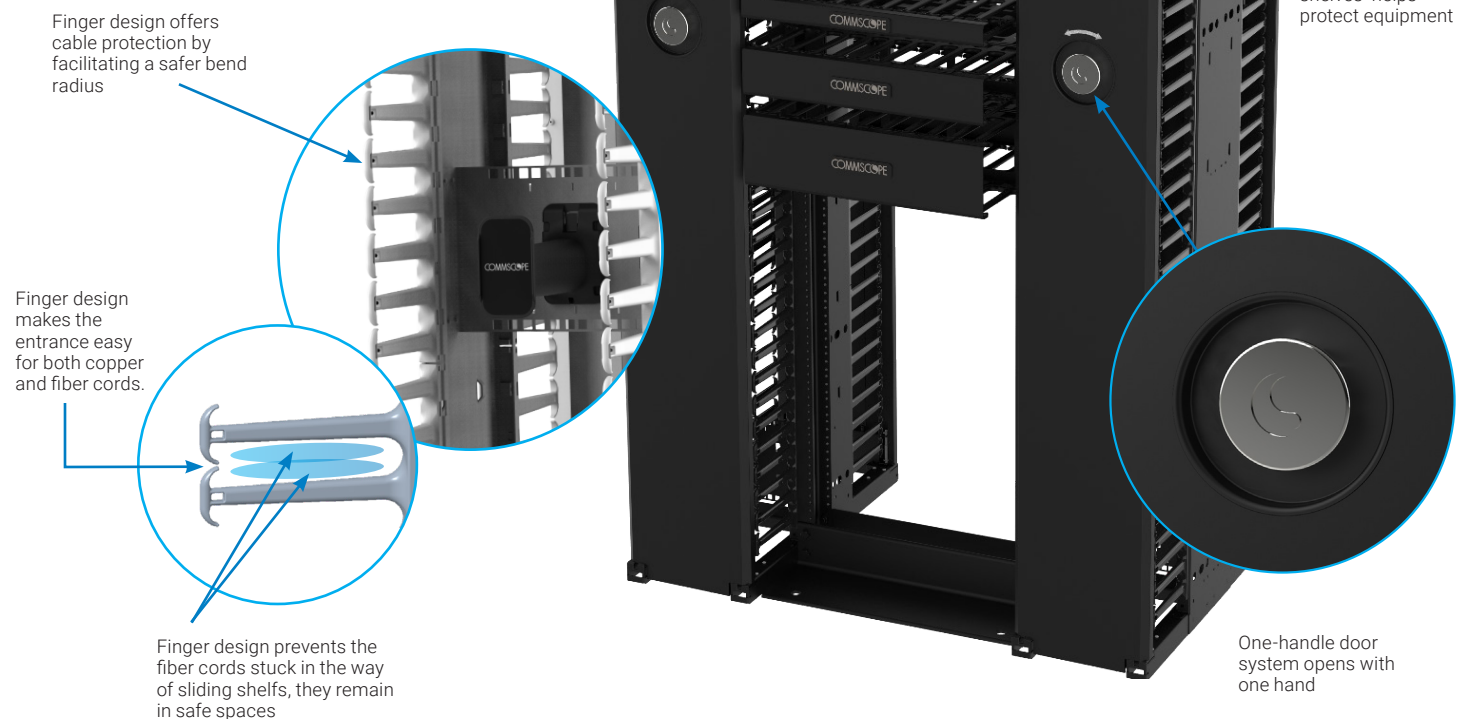
*Introducing the SYSTIMAX CableGuide 360 cable management platform. Simplified, flexible and intuitive cable management for almost any vertical and horizontal patching application.*

# CableGuide 360 cable management platform

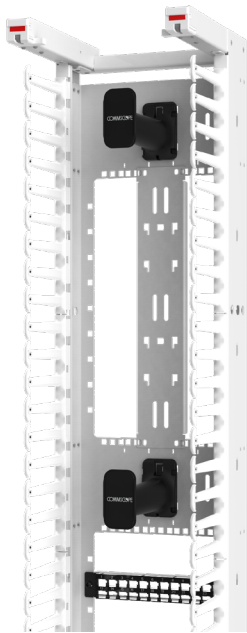
The SYSTIMAX CableGuide 360 portfolio enables enterprise and campus network managers to stay ahead of the disruptive changes in their vertical and horizontal cabling networks. It is uniquely designed to simplify, organize and protect your growing inside cable plant.

Flexible, single-handed door operation, strong but flexible fingers, and a wide range of panel mounting options translate to a future-ready solution that can significantly simplify cable management, maintain optimal bend radius and protect your network's ROI.

Highly customizable, the CableGuide 360 portfolio provides an end-to-end cabling management solution with performance that's fully backed by the SYSTIMAX Assurance™ program. With CommScope's global production and redundant regional distribution network, solutions in the CableGuide 360 platform are available when and where you need them.



# The difference is in the details



Back frame with quick release removable spools



Rack mount units



Flat or angled panels can be used

The CableGuide 360 platform features vertical cable managers (VCMs) and horizontal cable managers (HCMs). Both are specifically designed for ease of use, agile growth and superior cable organization and protection.

**Simplified user-focused design:** CableGuide 360 solutions are designed to be deployed and managed faster and more easily without requiring extensive product training or technical expertise.

- Patented, one-handed door keeps one hand free to handle and route cables
- Patented visual indicator shows whether doors are fully closed or ajar
- Low-resistance trough cover makes opening and closing much easier
- Quick-release removable spool can be placed in multiple positions
- Fingers align with rack mount units, for faster, accurate moves/adds/changes
- Strong yet lightweight, it's durable, easy to maneuver and reposition
- Ships assembled, ready to use.

**Flexible and future-ready:** Flexible, customizable components, accessories and configurations enable you to handle more diverse applications and environments and adapt to future demands.

- Horizontal troughs available in 1U, 2U and 3U sizes
- Accepts 19-inch (Zero-U) vertical panels and M2400 horizontal panels ,
- Accessories include spools, bars and grounding
- Black, silver and white color options
- Four different cabinet widths and two different heights
- Accepts flat and angled panels
- Supports copper and/or fiber cabling systems
- Installs onto almost any two- or four-post panel racks.





Cable spools and accessories

**Cable protection, application support:** Designed with SYSTIMAX innovation, CableGuide 360 solutions protect your copper and fiber cabling infrastructure—performance assured in writing.

- Strong, flexible fingers support higher cable densities and standards-based bend radii
- Clean, organized cable routing protects against pinching and crushing
- Cable spools and accessories store and protect overlength cabling
- More rigid, stable and durable build with lighter trough covers
- Covered by the SYSTIMAX Assurance program and 25-Year Warranty
- Comprehensive end-to-end solution from a single vendor and globally available

## Do more with the CableGuide 360 platform



**Increase**  
productivity without  
relying on highly  
skilled personnel



**Support rapid**  
growth (planned  
and unplanned)  
across the network  
with one portfolio.



**Reduce**  
management  
costs and MTTR  
with better  
organized cabling  
that's easier  
to trace.



**Manage and**  
maintain optimum  
bend radii with  
strong, flexible  
fingers and  
intuitive routing



**Adapt to most**  
applicas and  
environments with  
multiple sizes,  
configurations,  
and deployment  
options.



**Rest easy, knowing**  
your application  
performance is  
supported by  
the SYSTIMAX  
Assurance™  
Program

### CableGuide Essential: Expand your options

The CableGuide 360 solution is a full-featured system designed to address the challenges of a complex cabling environment. For customers who don't need the full functionality, we offer the CableGuide Essential™ solution, with all the innovation and value in a more streamlined, basic design.

### Organize. Manage. Protect. Repeat.

With simplified, user-friendly designs, incredible flexibility and cable protection and application support, one innovative portfolio can organize, manage and protect your vertical and horizontal patching applications. SYSTIMAX CableGuide 360 cable management solutions, from a name you know and trust. CommScope.

For more information about the CableGuide 360 and CableGuide Essential cable management solutions, [visit the solution page](#).

CommScope pushes the boundaries of communications technology with game-changing ideas and ground-breaking discoveries that spark profound human achievement.

We collaborate with our customers and partners to design, create and build the world's most advanced networks. It is our passion and commitment to identify the next opportunity and realize a better tomorrow.

For more information, visit the SYSTIMAX 2.0 solutions page

**[www.systimax.com](http://www.systimax.com)**



**SYSTIMAX®**  
COMMSCOPE

---

[systimax.com](http://systimax.com)

Visit our website or contact your local CommScope representative for more information.

© 2025 CommScope, LLC. All rights reserved. CommScope and the CommScope logo are registered trademarks of CommScope and/or its affiliates in the U.S. and other countries. For additional trademark information see <https://www.commscope.com/trademarks>. All product names, trademarks and registered trademarks are property of their respective owners.

BR-120109-EN (06/25)